

**TMM79 Antibody (C-term)**  
**Affinity Purified Rabbit Polyclonal Antibody (Pab)**  
**Catalog # AP5286b****Specification**

---

**TMM79 Antibody (C-term) - Product Information**

Application	WB,E
Primary Accession	<a href="#">Q9BSE2</a>
Other Accession	<a href="#">Q5E9U3</a>
Reactivity	Human
Predicted	Bovine
Host	Rabbit
Clonality	Polyclonal
Isotype	Rabbit IgG
Calculated MW	43520
Antigen Region	362-391

**TMM79 Antibody (C-term) - Additional Information****Gene ID** 84283**Other Names**

Transmembrane protein 79, Mattrin, TMEM79, MATT

**Target/Specificity**

This TMM79 antibody is generated from rabbits immunized with a KLH conjugated synthetic peptide between 362-391 amino acids from the C-terminal region of human TMM79.

**Dilution**

WB~~1:1000

E~~Use at an assay dependent concentration.

**Format**

Purified polyclonal antibody supplied in PBS with 0.09% (W/V) sodium azide. This antibody is purified through a protein A column, followed by peptide affinity purification.

**Storage**

Maintain refrigerated at 2-8°C for up to 2 weeks. For long term storage store at -20°C in small aliquots to prevent freeze-thaw cycles.

**Precautions**

TMM79 Antibody (C-term) is for research use only and not for use in diagnostic or therapeutic procedures.

**TMM79 Antibody (C-term) - Protein Information****Name** TMEM79

**Synonyms** MATT

**Function** Contributes to the epidermal integrity and skin barrier function. Plays a role in the lamellar granule (LG) secretory system and in the stratum corneum (SC) epithelial cell formation (By similarity).

**Cellular Location**

Lysosome. Golgi apparatus, trans- Golgi network. Membrane; Multi-pass membrane protein. Note=Colocalized with TGOLN2 in the trans-Golgi network. Colocalized with LAMP1 in the lysosome (By similarity).

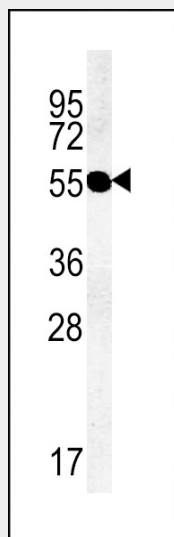
**Tissue Location**

Expressed in the epidermis of the skin. Expressed in epithelial cells of the outermost layer of the stratum granulosum (SG) and hair follicles (at protein level)

**TMM79 Antibody (C-term) - Protocols**

Provided below are standard protocols that you may find useful for product applications.

- [Western Blot](#)
- [Blocking Peptides](#)
- [Dot Blot](#)
- [Immunohistochemistry](#)
- [Immunofluorescence](#)
- [Immunoprecipitation](#)
- [Flow Cytometry](#)
- [Cell Culture](#)

**TMM79 Antibody (C-term) - Images**

Western blot analysis of lysate from PC-3 cell line, using TMM79 Antibody (C-term)(Cat. #AP5286b). AP5286b was diluted at 1:1000 at each lane. A goat anti-rabbit IgG H&L(HRP) at 1:5000 dilution was used as the secondary antibody. Lysate at 35ug per lane.

**TMM79 Antibody (C-term) - References**

Olsen, J.V., et al. Cell 127(3):635-648(2006)